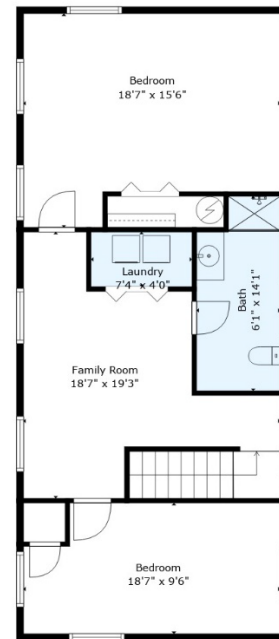
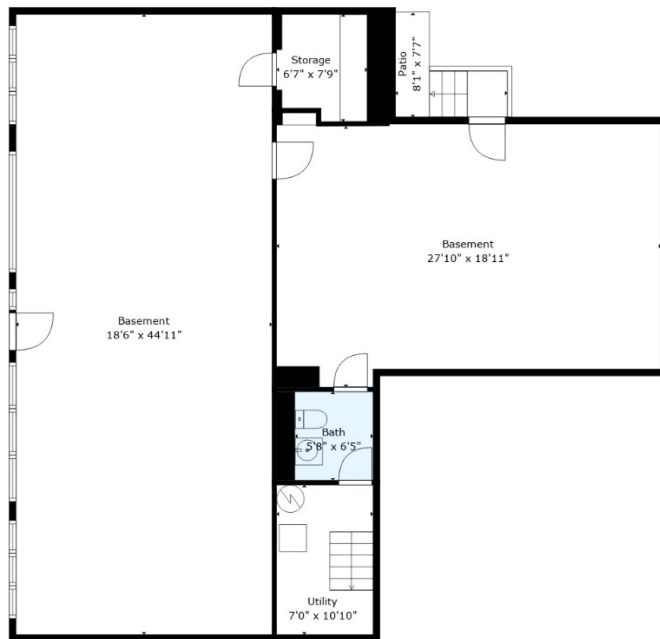


Floor 2



Floor 3



Floor 1

TOTAL: 2864 sq. ft

BELOW GROUND: 566 sq. ft, FLOOR 2: 1462 sq. ft, FLOOR 3: 836 sq. ft
 EXCLUDED AREAS: UTILITY: 94 sq. ft, BASEMENT: 835 sq. ft, STORAGE: 60 sq. ft,
 PATIO: 107 sq. ft, DECK: 411 sq. ft, PORCH: 235 sq. ft,
 WALLS: 249 sq. ft

Improvements – 622 Front Street

Refinished hardwood floors

New kitchen with brand-new stainless-steel appliances

Updated ground level ceiling, walls, and flooring

New lighting

New rear deck

All new HVAC units

New bathroom upstairs (1st and 3rd level)

Interior and exterior painting

Refinish exterior siding

Replace roof

Replace part of front porch

Updated landscaping